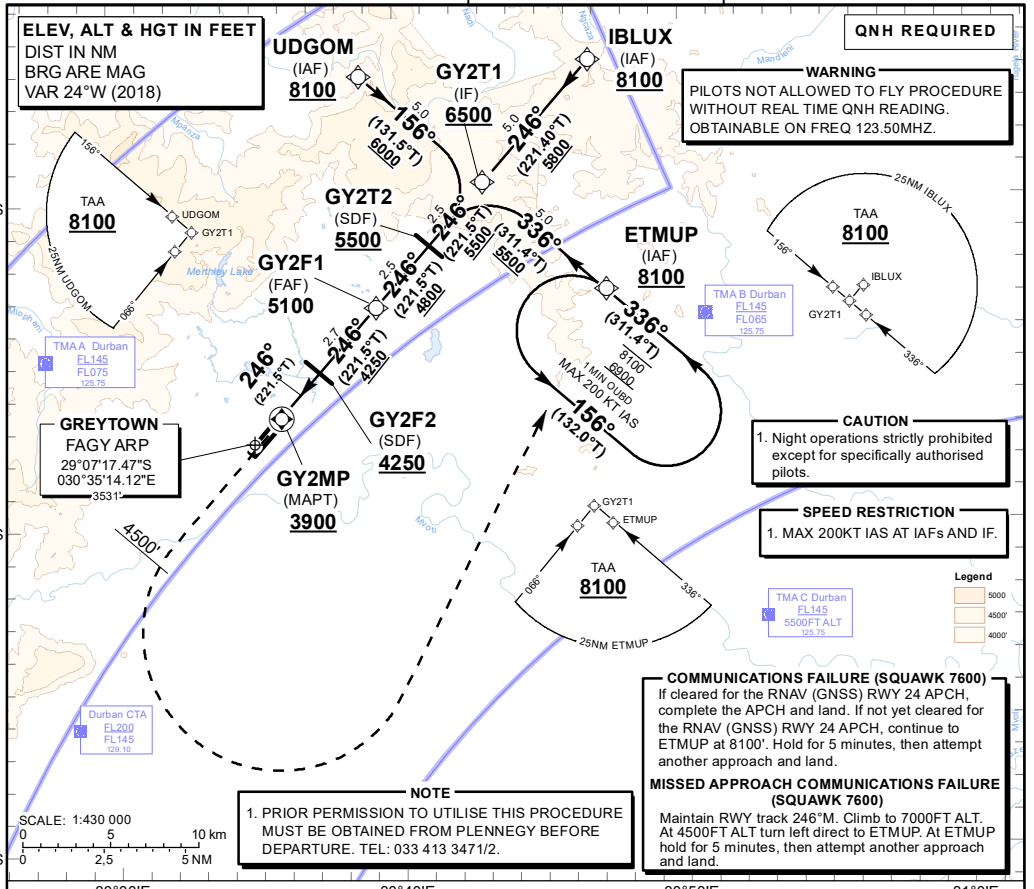


**INSTRUMENT APPROACH CHART - ICAO** **AERODROME ELEV 3531'**  
 HEIGHTS RELATED TO **THR RWY 24 - ELEV 3472'**

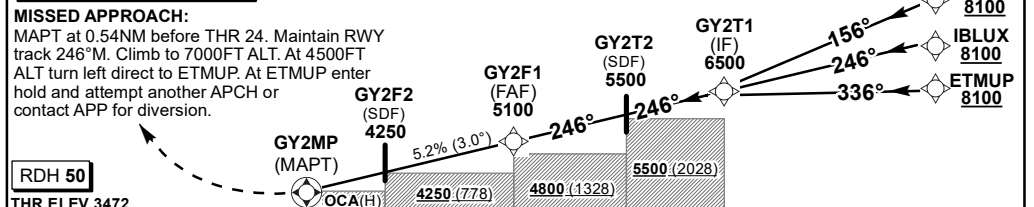
GREYTOWN: 123.50  
 DURBAN APP: 125.75

**GREYTOWN RNAV (GNSS) RWY 24 CAT A - C**



Distance to THR 24	FAF	4	3	2.3 (SDF)	2	1	
ADVISORY ALT(HGT)	5100 (1628)	4790 (1318)	4470 (998)	4250 (778)	4160 (688)	3900 (428)	

**TRANSITION ALT 7500**  
**TRANSITION LEVEL ATC**



**MISSED APPROACH:**  
 MAPT at 0.54NM before THR 24. Maintain RWY track 246°M. Climb to 7000FT ALT. At 4500FT ALT turn left direct to ETMUP. At ETMUP enter hold and attempt another APCH or contact APP for diversion.

Straight-in Approach	OCA (H)	A	B	C	GS	KT	80	100	120	140	160	180
	LNAV ONLY	3900 (428)	3900 (428)	3900 (428)	GY2F1 to THR	M:S	3:45	3:00	2:30	2:09	1:53	1:40
	RVR	1500m	1500m	1800m	Rate of descent	FPM	421	526	631	736	842	947
	ALS OUT	NIL			<b>NOTE:</b> 1. Initial approach only with ATC approval. 2. Descend in the hold to 7000FT ALT. 3. This procedure is conducted partially outside controlled airspace, entirely at the discretion of the pilot in command. 4. MAPT 0.54NM prior THR 24. 5. Turns prior to MAPT prohibited.							
Circling	Circling Prohibited											